

Wildcat Hornline Warm-Up Book

Tuba

2009-2010

Long Tones-1

Long Tones-1

Musical notation for Long Tones-1, Tuba part. The piece is in 4/4 time with a key signature of two flats (B-flat and E-flat). It consists of three staves of music. The first staff begins with a mezzo-piano (*mp*) dynamic and features a series of eighth-note pairs: G2, A2; B-flat2, C3; D3, E-flat3; F3, G3. The second staff continues with eighth-note pairs: A2, B-flat2; C3, D3; E-flat3, F3; G3, A2. The third staff concludes with eighth-note pairs: B-flat2, C3; D3, E-flat3; F3, G3, followed by a whole note G3. The piece ends with a double bar line.

Long Tones-2

Long Tones-2

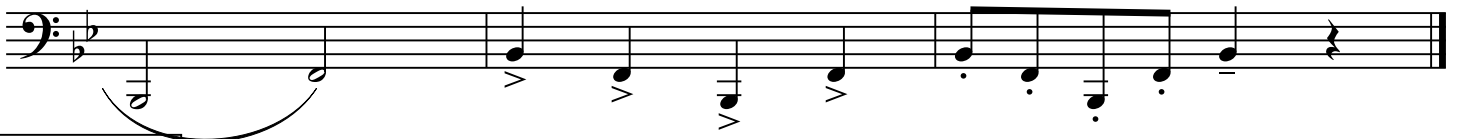
Musical notation for Long Tones-2, Tuba part. The piece is in 4/4 time with a key signature of two flats (B-flat and E-flat). It consists of six staves of music. The first staff begins with a mezzo-forte (*mf*) dynamic and features a series of eighth-note pairs: G2, A2; B-flat2, C3; D3, E-flat3; F3, G3. The second staff continues with eighth-note pairs: A2, B-flat2; C3, D3; E-flat3, F3; G3, A2. The third staff continues with eighth-note pairs: B-flat2, C3; D3, E-flat3; F3, G3, followed by a whole note G3. The fourth staff begins with a mezzo-piano (*mp*) dynamic and features a series of eighth-note pairs: G2, A2; B-flat2, C3; D3, E-flat3; F3, G3. The fifth staff continues with eighth-note pairs: A2, B-flat2; C3, D3; E-flat3, F3; G3, A2. The sixth staff concludes with eighth-note pairs: B-flat2, C3; D3, E-flat3; F3, G3, followed by a whole note G3. The piece ends with a double bar line.

Articulations-1

Articulations-1 consists of five staves of music in bass clef, 4/4 time, with a key signature of two flats. The first staff begins with a piano (*p*) dynamic and contains a continuous eighth-note pattern. The second staff starts with a mezzo-piano (*mp*) dynamic and features a mix of eighth and quarter notes. The third staff is marked mezzo-forte (*mf*) and includes a quarter rest followed by eighth notes. The fourth and fifth staves continue the eighth-note patterns, with the fifth staff ending with a double bar line.

Articulations-2

Articulations-2 consists of three staves of music in bass clef, 4/4 time, with a key signature of two flats. The first staff starts with a mezzo-forte (*mf*) dynamic and includes a slur over the first two measures, followed by eighth notes with accents (>) and a dotted quarter note. The second and third staves continue with eighth-note patterns, some featuring accents and slurs, and end with a double bar line.



Articulations-3



Articulations-4

Musical notation for Articulations-4, featuring bass clef, 3/4 time signature, and dynamic markings *mp*, *mf*, and *f*. The piece consists of four staves. The first staff begins with a *mp* dynamic and a slur over the first two measures. The second staff features a *mf* dynamic and includes accents (>) and slurs. The third staff includes a triplet of eighth notes marked with a *f* dynamic. The fourth staff concludes with a single note.

Ab Tuning Sequence

Musical notation for Ab Tuning Sequence, featuring bass clef, 4/4 time signature, and dynamic markings *p*, *mp*, *mf*, *f*, and *ff*. The first staff shows a sequence of notes starting with a *p* dynamic and a slur, followed by a *mp* dynamic. The second staff shows four chords with dynamics *mf*, *f*, and *ff* indicated by slurs.

Bb Tuning Sequence

Musical notation for Bb Tuning Sequence, featuring bass clef, 4/4 time signature, and dynamic markings *mf*, *f*, and *ff*. The first staff shows a sequence of notes with a *mf* dynamic and slurs. The second staff shows two chords with dynamics *f* and *ff* indicated by slurs.

"Madison Scouts Block"

Musical notation for the "Madison Scouts Block" in bass clef, 4/4 time, key of B-flat major. The piece consists of three staves. The first staff begins with a dynamic marking of *p* and ends with *mf*. The second staff includes dynamic markings of *mp* and *f*. The third staff concludes with a *mp* dynamic marking. The music features a series of half notes and whole notes, some with slurs and accents.

"A.B.B.A. Block"

Musical notation for the "A.B.B.A. Block" in bass clef, 4/4 time, key of B-flat major. The piece consists of five staves of music. The first staff begins with a dynamic marking of *mf*. The music is characterized by eighth-note patterns, often beamed in groups of four, with various slurs and accents throughout. The structure follows an A.B.B.A. form, with the first and fourth staves being identical.

"Swivel Exercise"

"Rotary Exercise"

First musical staff in bass clef, key signature of two flats, 4/4 time. It features a sequence of eighth-note patterns with slurs and accents.

Second musical staff in bass clef, key signature of two flats, 4/4 time. It continues the eighth-note patterns with slurs and accents.

Third musical staff in bass clef, key signature of two flats, 4/4 time. It features a sequence of eighth-note patterns with slurs and accents.

"Traffic Exercise"

Fourth musical staff in bass clef, key signature of two flats, 4/4 time. It features a sequence of eighth-note patterns with slurs and accents, marked with dynamics *mp*, *mf*, and *f*.

Fifth musical staff in bass clef, key signature of two flats, 4/4 time. It features a sequence of eighth-note patterns with slurs and accents, marked with dynamics *p* and *f*.

Sixth musical staff in bass clef, key signature of two flats, 4/4 time. It features a sequence of eighth-note patterns with slurs and accents, marked with dynamics *sfz*, *ff*, *fff*, and *f*.